

Home Grown @ Henlow

News and
Updates from
the Beds!



News from the Garden

Some of you may have noticed new editions to the bed outside of the new block. Winter doesn't have to be bare mud and weed, so I've been busy looking at things that can add a bit of colour, like winter primrose, and as we've not had much snow I added some of my own in the form of snowdrops. These will spread over the next few winter seasons adding more colour. Hidden in among all of this, for those of you with keen eyes, are little bulbs just showing their green leaves, hopefully, if I can keep the squirrels off of them, you will see a host of mini Narcissus. I will be adding more bulbs in late winter/early spring for some wonderful summer colours.

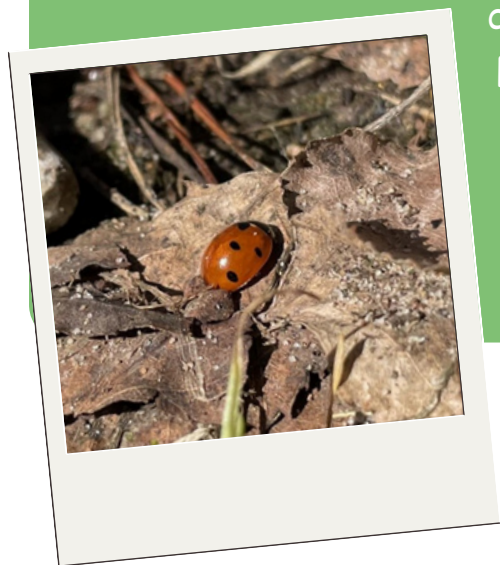
In the vegetable garden the onions and the garlic are doing very well, they appear to have enjoyed the frost and the cold even if we haven't. Unfortunately something else enjoyed the purple sprouting broccoli. I'm still learning, that is the great thing about gardening, it can teach us so much. I'll be looking into eco friendly pest control and netting against some of the bigger pests such as deer.



Let's Talk Rubbish!

Some of you may see me pottering about, digging holes, planting, crawling around in the beds. What you might not see is me picking up litter. Most weeks when I come in one of the first jobs I do is collecting the odd crisp packet and plastic water bottle out of the beds. Some of these are well weathered and some are very new, and with the high winds of winter rubbish has the ability to get in everywhere. We all know that litter isn't good, but in a planting area it can do more than just damage plants and look unsightly. While I'm weeding in the winter I am mindful to leave some leaf litter in the beds, firstly it composts down and adds to the soil and secondly it makes a lovely little hiding place for little hibernators like ladybirds. The problem is, they don't really know the difference between a pile of leaves and a pile of crisp packets, as long as it's dark and warm they feel at home. This is a problem, because while I might not move the leaves, I will move the rubbish, and that can have

devastating consequences for whatever has made it's home under it. There are plenty of bins around the site, please try to make sure rubbish goes in those and not in your beautiful beds, if not for my sake, for the sake of the tiny inhabitants that share your space.



January Jobs



Plant flowering snowdrops to establish new colonies. Deadhead winter flowers.



Tidy and fix beds and fences. Sort seeds. Clean and sharpen tools. Sort pots

If you would like to know more, have a question or a suggestion please feel free to contact Mrs. Evans who will pass your messages on.
Thank you. - Mrs Swindle